

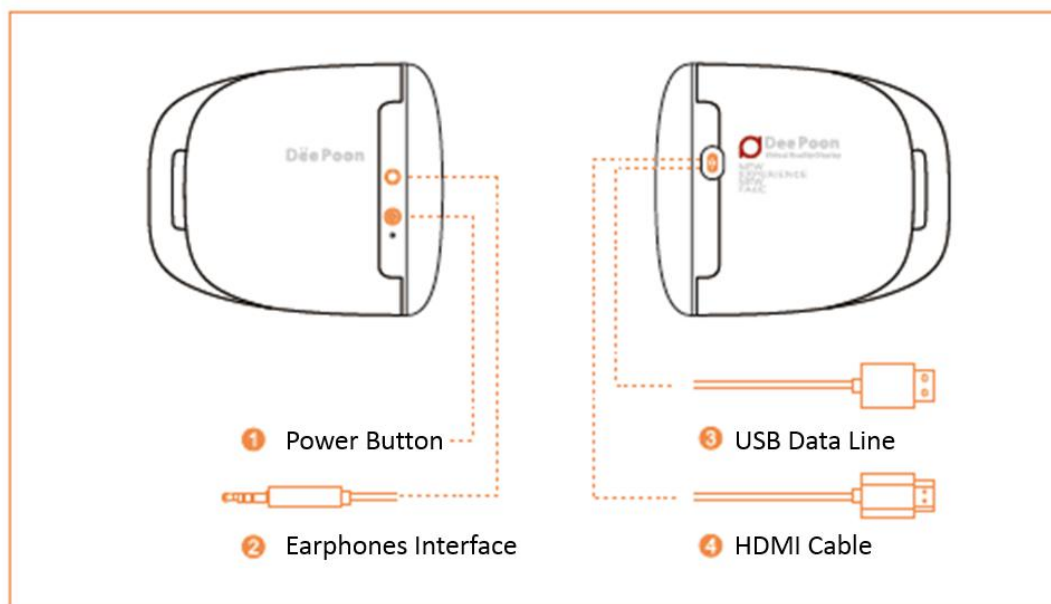
# Deepoon E2 Virtual Reality Helmet User Manual

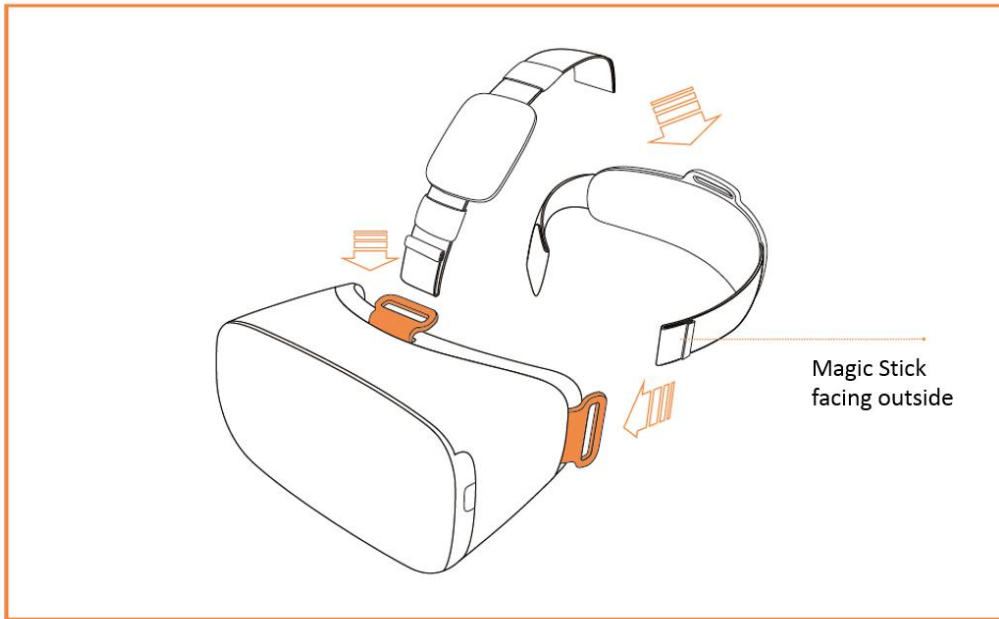
## 1 Product Overview

<b>Main Device</b>	Deepoon VIRTUAL REALITY HELMET
<b>Accessories</b>	HDMI&USB Line(2 in 1)
	User Manual & Warranty Card
	Glasses cloth

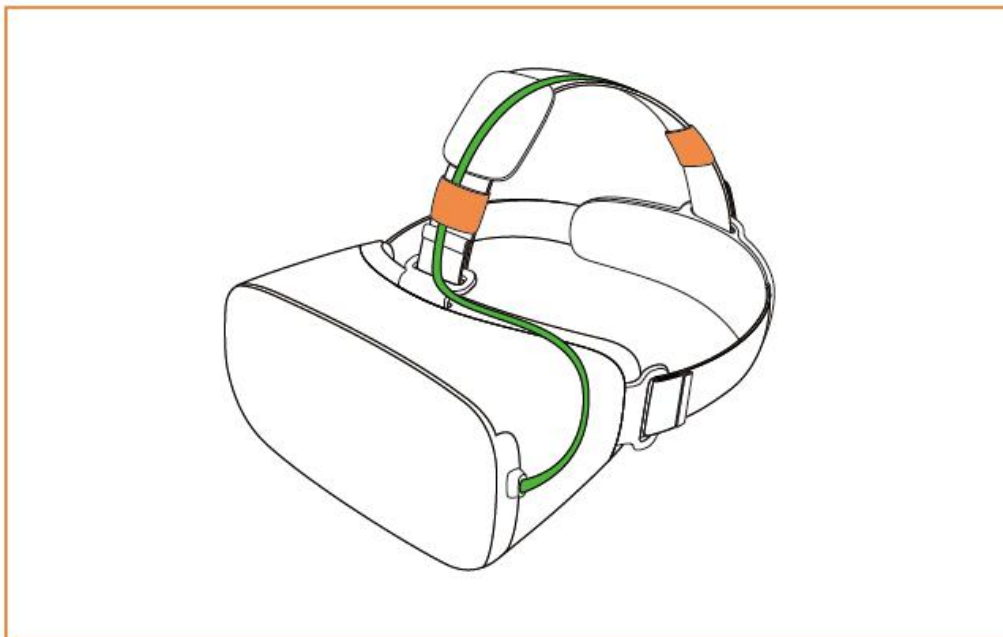
<b>Image display</b>	Resolution	1080*1920
	Refresh rate	75HZ
<b>Field of View</b>	Field of View	120°
<b>Physical interface</b>	HDMI	HDMI 1.4B
	USB	USB 2.0
<b>Head Tracking</b>	Sensor	Gravity acceleration、 Gyroscope、Magnetometer
	Refresh rate	1000HZ
<b>Running Mode</b>	DeePoon Mode	

## 2 Product Connecting Instruction





Head belt connecting instruction



Cable Position

### 3 Software Installation & Using Instruction

Please check the instruction on our official website: [www.deepoon.com](http://www.deepoon.com), or contact our dealer for more information.

## 4 How To Use

### 4.1 Preparation

Connect our product to PC (Check Step 2)

Choose the game on content platform

### 4.2 Using

When your Deepoon helmet is normally connected and the indicator light is blue, wear our helmet, fasten the head belt, and turn you head slightly according to the change of game scene, you will have a wonderful experience of all kinds of immersive game and application.

Some game supports interaction of keyboard\mouse\joystick.

## 5 Device Shutdown

### 5.1 Turn off the screen

When Deepoon virtual reality helmet is normally connected to PC, push the power button on the right side the screen will be powered off and come into standby mode.

### 5.2 Power off:

If you won't use our device for a long time, we suggest you to pull off the USB data line and turn off the PC.

## 6 Hardware Upgrading

### 6.1 Install driver program.

6.2 Run the driver and make sure your computer is connected to the internet, then our system will check the status of software and hardware version automatically and remind you to upgrade if there is new version.

**Caution:** Please don't pull off the USB line or turn off your computer while upgrading.

If the USB line was loosen during upgrading, upgrading will fail, you can pull off the USB line and insert it again while pressing the power button for several seconds and Deepoon will enter boot mode.

Now the indicator light will be purple, run your driver program and try to upgrade again.

## 7 Playing Video

Deepoon Virtual Reality Helmet can support viewing 3D and full view video, you can visit our official website [www.deepoon.com](http://www.deepoon.com) for more information